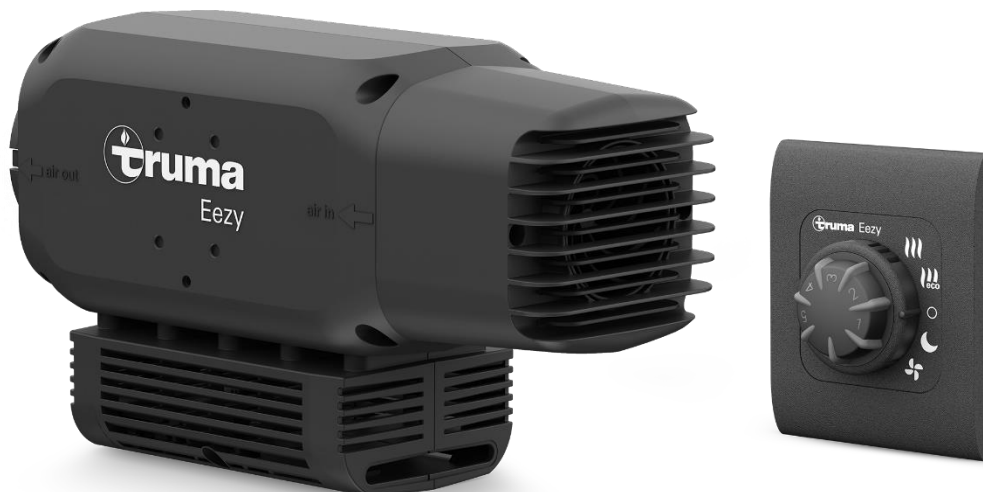


Press release

Purely electric. Safe operation. Cleverly installed.

Eezy – the new electric heater from Truma

Truma, Europe's leading provider of technical system solutions for the caravan and motorhome industry, is set to launch a new heating solution: Eezy. The purely electric heater is ideal as a compact additional heater for many recreational vehicles and purposes.



BU: Eezy. The purely electric heater is ideal as a compact additional heater for many recreational vehicles and purposes.

In vehicles without heating, Eezy provides pleasant warmth on cool summer nights or in the transitional seasons. For larger caravans or motorhomes, Eezy offers additional heating power for cold zones, for example in an alcove or rear bathroom. Eezy is also perfect as an additional heater for purely electric vehicles or vehicles with air conditioning including heat pump function.

Impressive technology

The heater works with 230 V AC shore power. This operates two heating coils at 900 W each. It is controlled by a 12 V DC power supply, for example via the vehicle battery. The room air is sucked in by an integrated fan, heated by the heating coils if needed, and fed back into the living space through the optional warm air ducts. As a purely electric heater,

Eezy enables emission-free heating and lets you make the most of all-inclusive campsite electricity.

Unlike commercially available electric heaters, Eezy can be integrated into the vehicle's furniture and is specifically approved for recreational vehicles. This ensures safe operation. Eezy is also very compact, does not require an exhaust cowl unlike gas or diesel heaters, and can be installed or retrofitted quickly and easily.

Different fan speeds for maximum comfort

The desired room temperature is set using a simple, intuitive control panel. Different modes and the desired target temperature can be selected. The power can thus be adapted to the electrical fuse at the power connection, for example the fuse at the campsite. In "max" heating mode, the vehicle is heated with maximum power and fan level. If you want to keep the vehicle warm or save electricity, you can select the "eco" heating mode. A low fan level ensures minimal noise during operation. In "Night" heating mode, the vehicle is kept warm and runs at the lowest ventilator level for even quieter operation. The heater can be switched on and off and the heating power can be adjusted using a rotary switch. Another control knob regulates the target temperature. The room temperature sensor for temperature control is installed in the control panel. An external temperature sensor can also be connected.

Flexible warm air distribution

Eezy can be installed with warm air distribution and a direct warm air outlet. When using warm air distribution, two warm air outlets are possible with a pipe duct length limited to max. 2 m. If Eezy is installed with a direct warm air outlet, a grille (accessories) must be installed for safe operation.

The new additional heater will be presented at the CMT in Stuttgart from 18 to 26 January and will be available in specialist stores from April 2025.

The advantages at a glance

- 100% electric: Purely electric heating at 230 V
- Safe: Specially approved for recreational vehicles
- Space-saving: Compact design, cleverly installed
- User-friendly: Intuitive, maintenance-free operation
- Versatile: Flexible use as a compact or additional heater

Technical data



Eezy

Energy sources		Electricity
Electrical mode 230 V	Rated heat output	450 W / 900 W / 1800 W
	Power consumption	4 A / 6 A / 10 A
	Power supply	WAGO Winsta Midi
Electrical mode 12 V	Operating mode	Recirculation mode without heating
	Output / Power consumption	max. 14 W / 1.2 A
	Air flow rate (free-blowing):	110 m ³ /h
Protection	Protection type	IPX 0B
	Protection class	Class 1
Standby current		< 0.1 A
Dimensions (LxWxH)	330 mm x 188 mm x 123 mm	
Weight	2.6 kg	

Press contact:

Jessica Schuster +49 (0)89 4617-2632, presse@truma.com, truma.com

Putzbrunn, January 2025

About the company: Almost every camper in Europe knows Truma. Since the company was founded by Philipp Kreis in 1949, Truma Gerätetechnik, which is part of the Truma Group, has offered accessories for caravans and motorhomes. In 75 years, Truma has developed into a successful international company that is still family-owned.

It all started with a gas lamp, which the company founder assembled himself in his living room. These days, Truma is a system supplier of heaters, air conditioning systems, hot water generators, manoeuvring assistants and gas supply for caravans. With the Truma iNet X System, digital networking is also increasingly finding its way into everyday camping – and the search for innovative ideas continues every day. It also helps that many of our employees are also passionate campers: they not only develop products, they use them too. It is precisely this passion and identification that makes Truma successful.

Truma Group develops and manufactures at the Putzbrunn site near Munich and has subsidiaries in the UK, Italy, Sweden, USA, China and Australia. Almost 1,000 employees worldwide do their best every day to offer customers reliable premium products and excellent service.