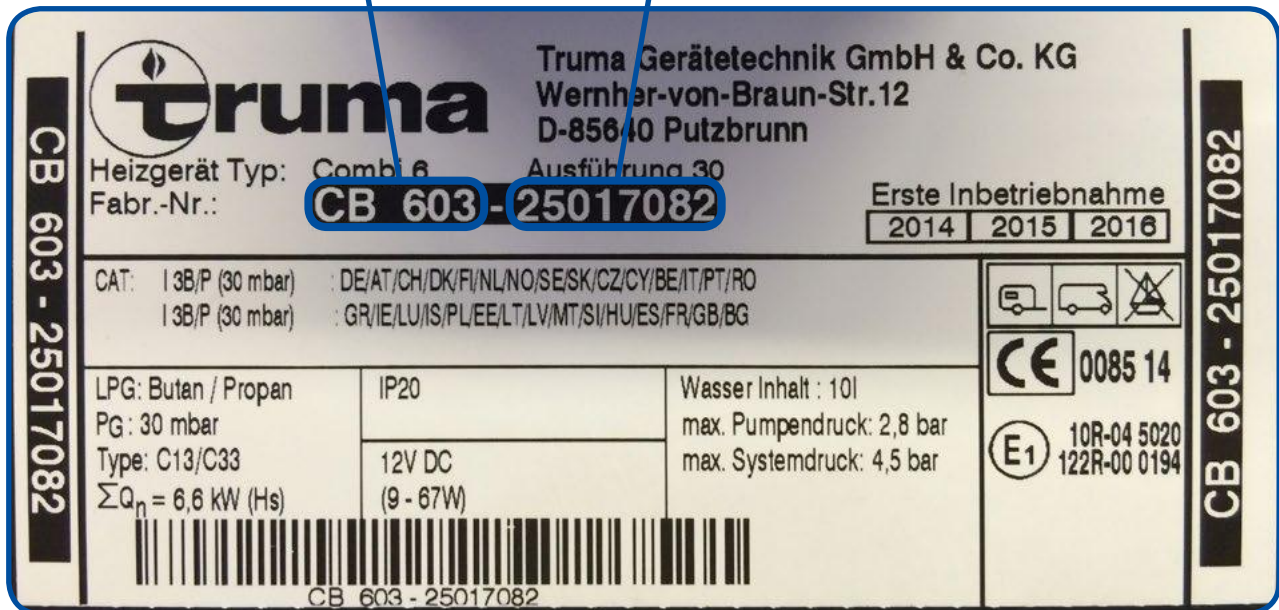


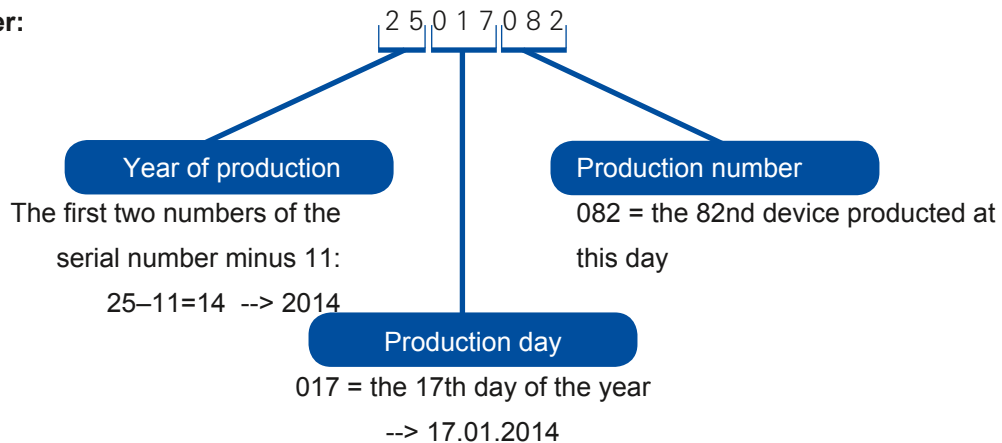
Truma serial numbers

Device information + Serial number



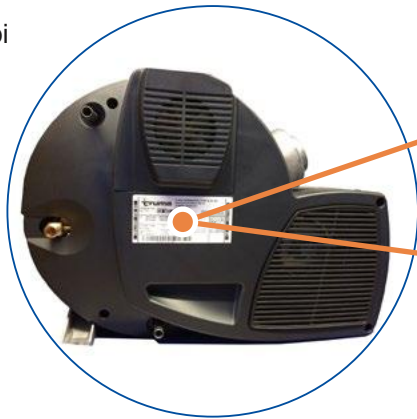
Device information: Information about device category, device type, gas pressure, etc.

Serial number:

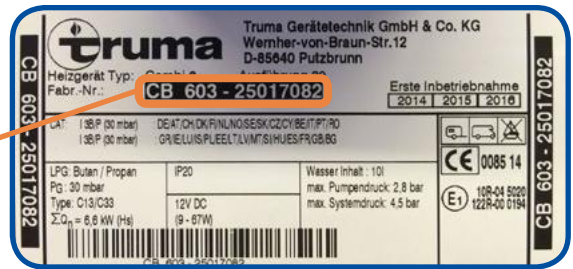


Truma heating systems

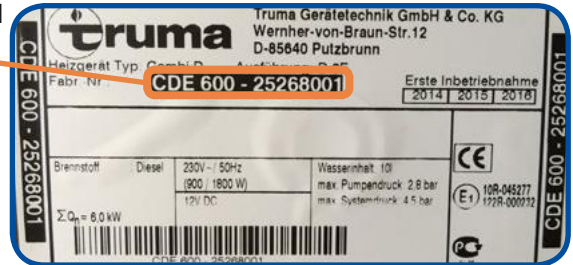
Combi



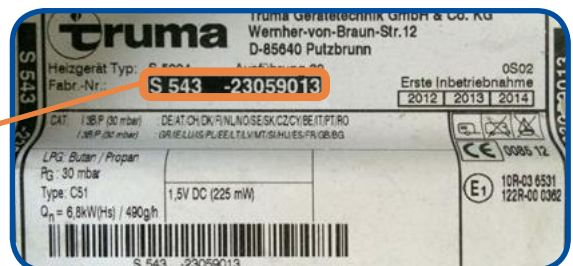
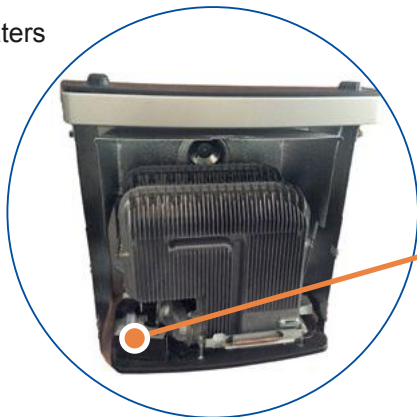
Gas



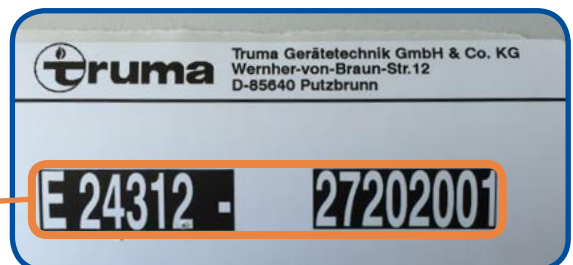
Diesel



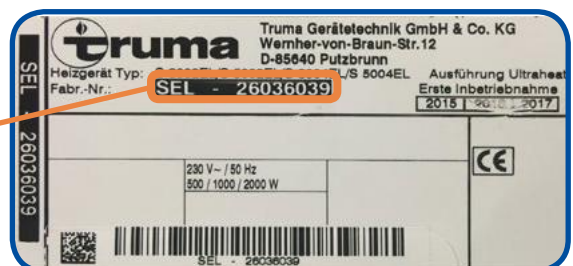
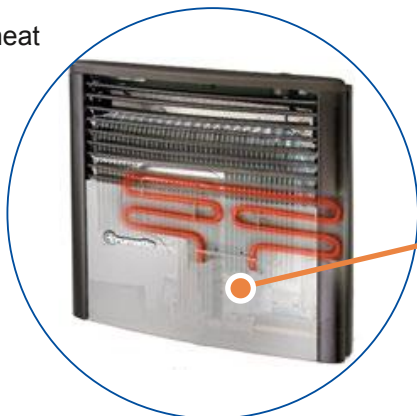
S heaters



E heaters

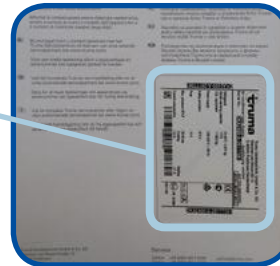
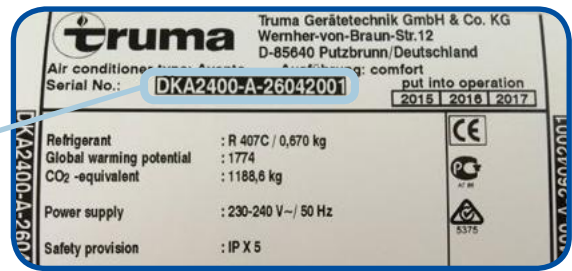
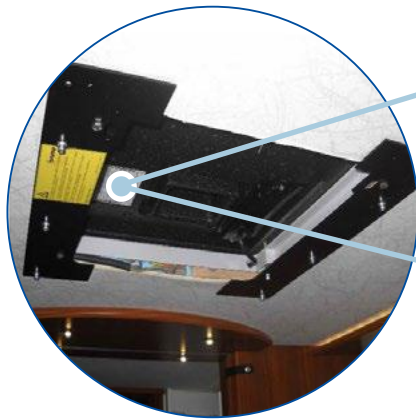


Ultraheat



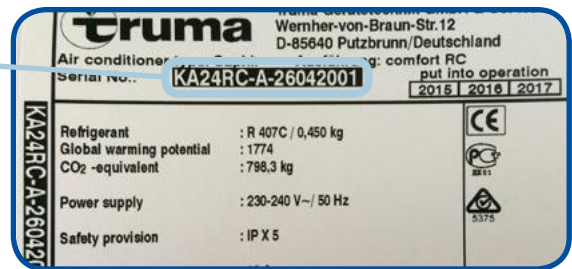
Truma air conditioning systems

Aventa



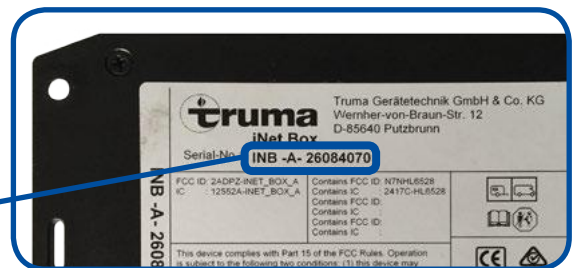
Type plate on the backside of the operating/installation instruction

Saphir



Truma digital device control

iNet Box

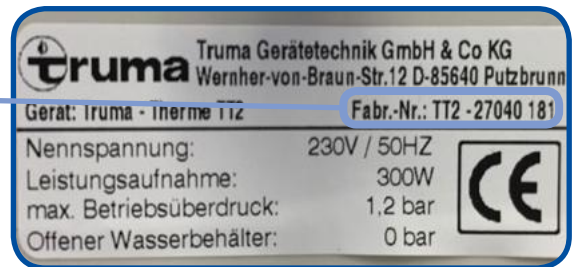


Truma water systems

Boiler



Therme

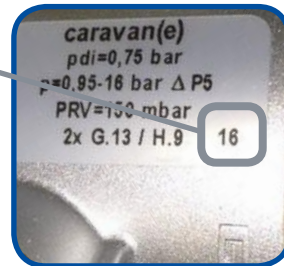


Truma gas supply

Gas pressure regulators



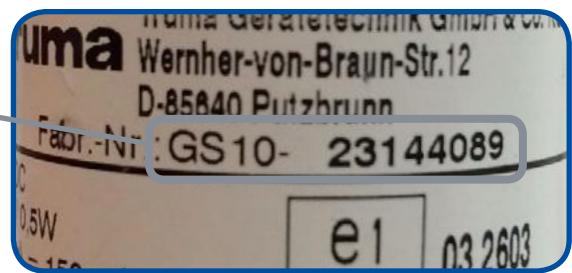
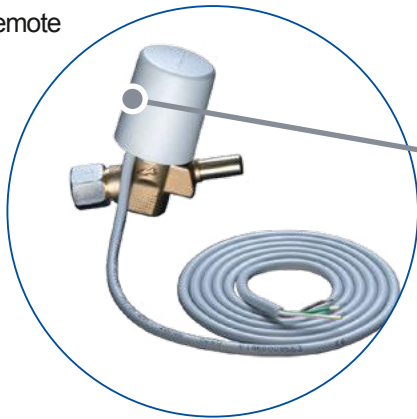
Gas pressure regulators up to the middle 2016 have a production month and year



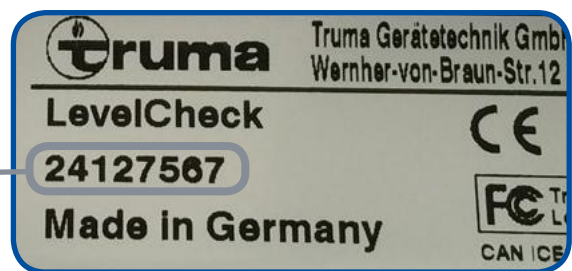
Gas pressure regulators from the middle 2016 **only** the production year

Truma gas supply

Gas remote switch

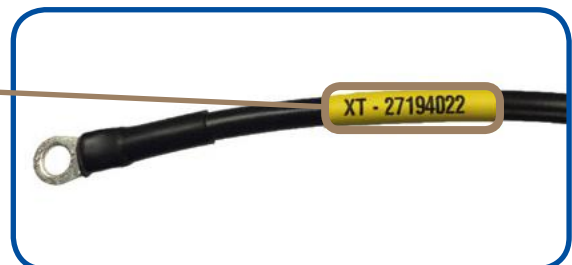
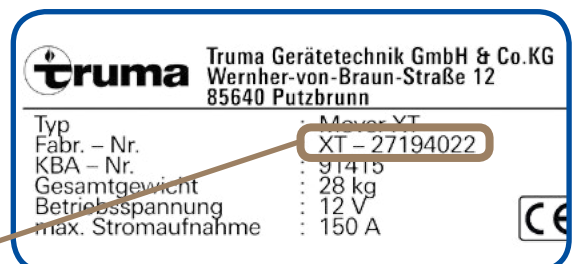
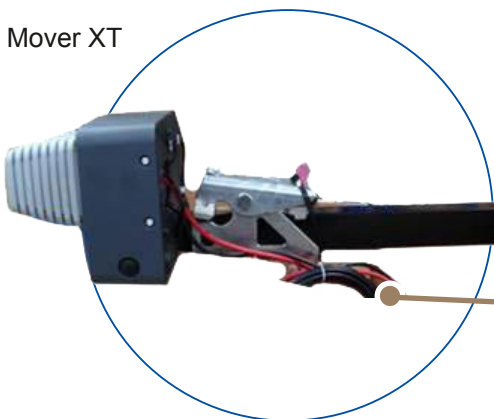


LevelCheck



Truma manoeuvring systems

Mover XT



New! Serial number also on power supply cable (from serial number XT - 27180xxx)

Truma manoeuvring systems

Other Truma Mover
E.g. Mover SR



1) There are two type plates as pull-off labels attached on the operating/installation instruction. After installation the dealer/end customer can fix it to the Truma Mover/in the caravan: (from serial number Mover SR - 27039xxx)

2) Fabric number bonded on the operating/installation instruction